



# Northwest Colorado Cumulative Socioeconomic Analysis

**Presented by:**

**BBC** RESEARCH & CONSULTING  
Doug Jeavons,  
Managing Director

BBC Research & Consulting  
3773 Cherry Creek N. Dr. Suite 850  
Denver, CO 80209-3868  
303-321-2547 tel.  
303-399-0448 fax  
jeavons@bbcresearch.com

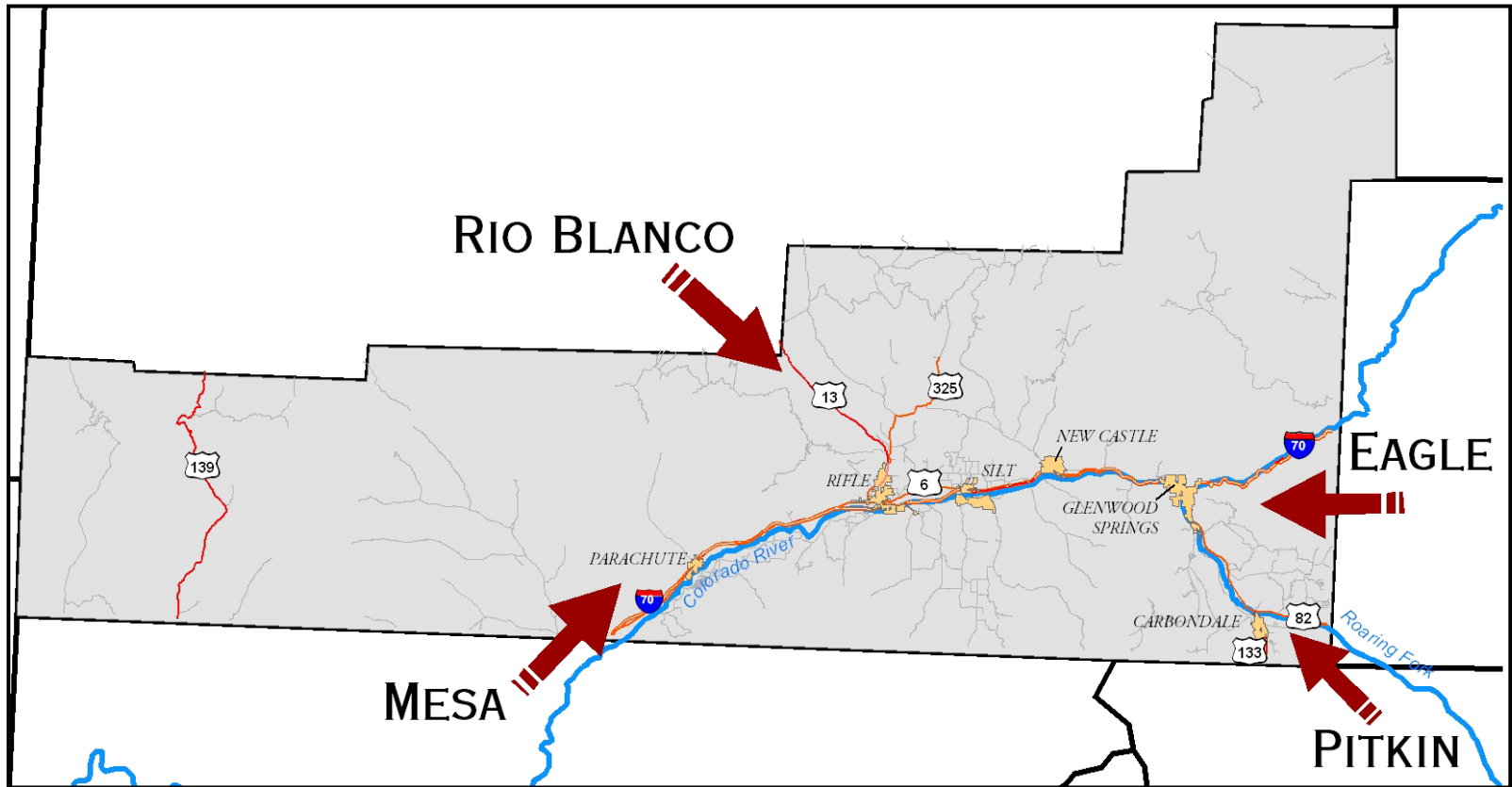
**Presented to:**

State of the Valley Symposium

**October 2007**

# Spring 2006 at this Symposium ...

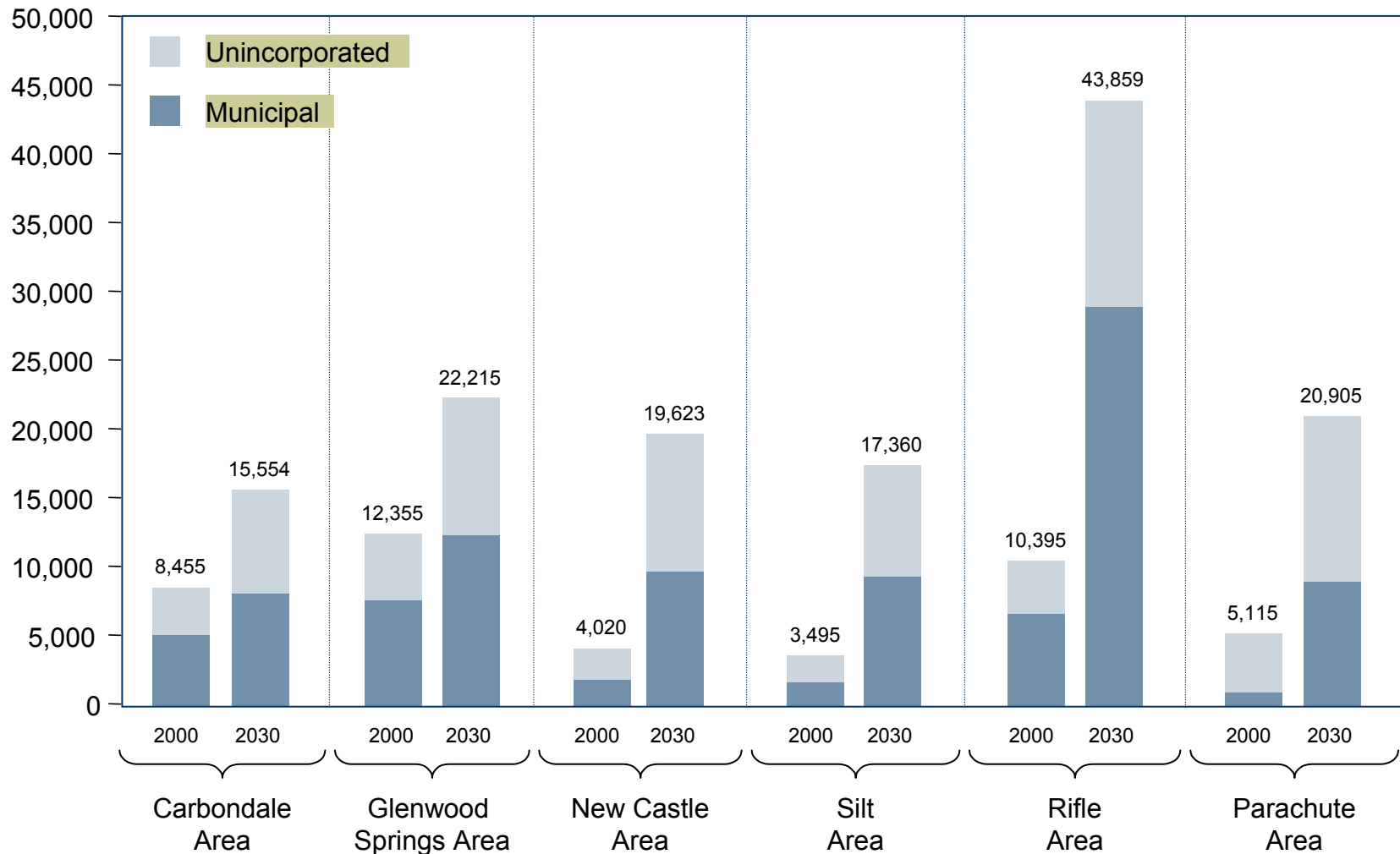
Garfield County faces regional growth pressures...



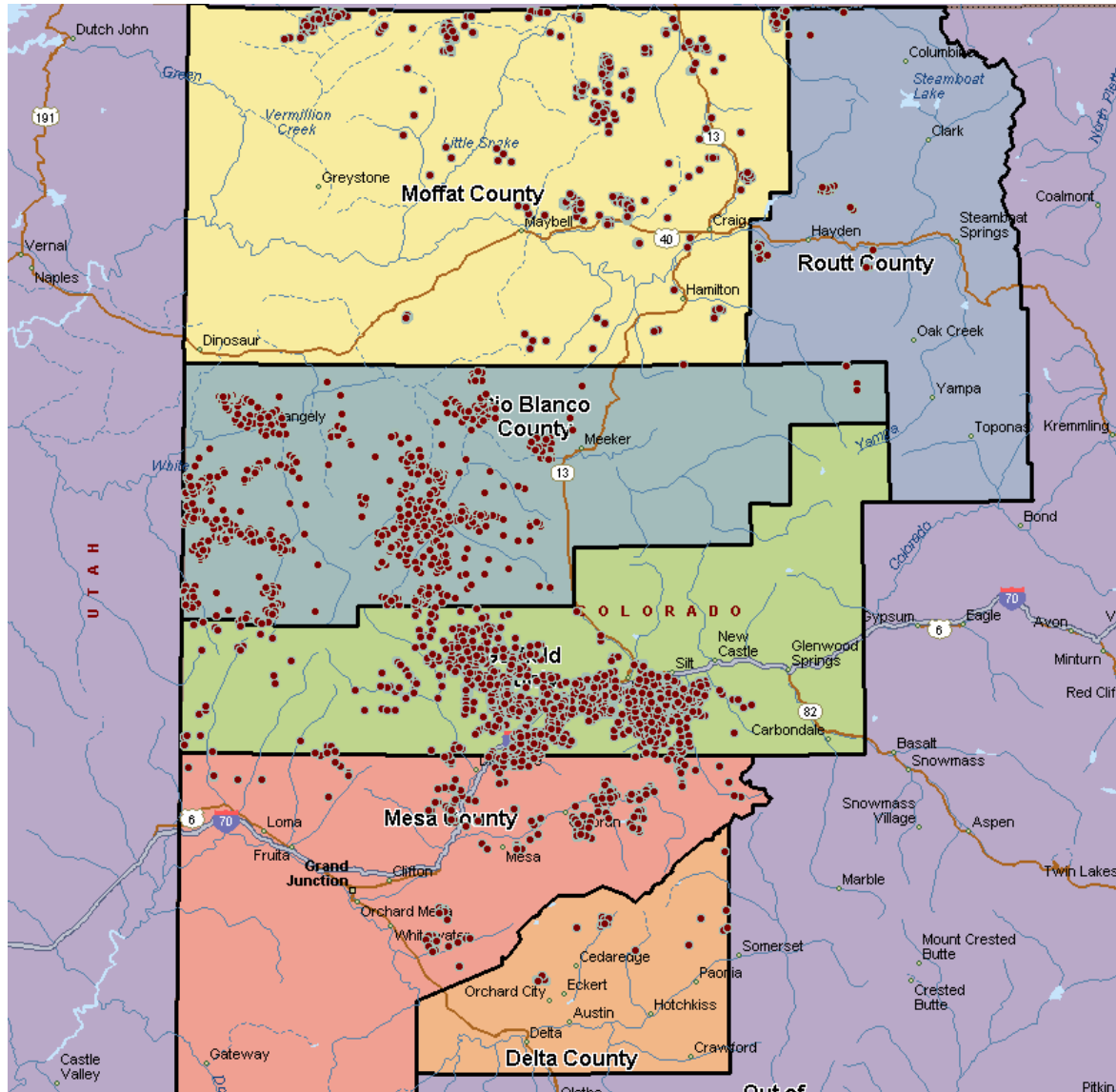
...with limited ability to accommodate demand.

# Garfield County Base Case Population Distribution (from Garfield County Socioeconomic Model)

## Total Population



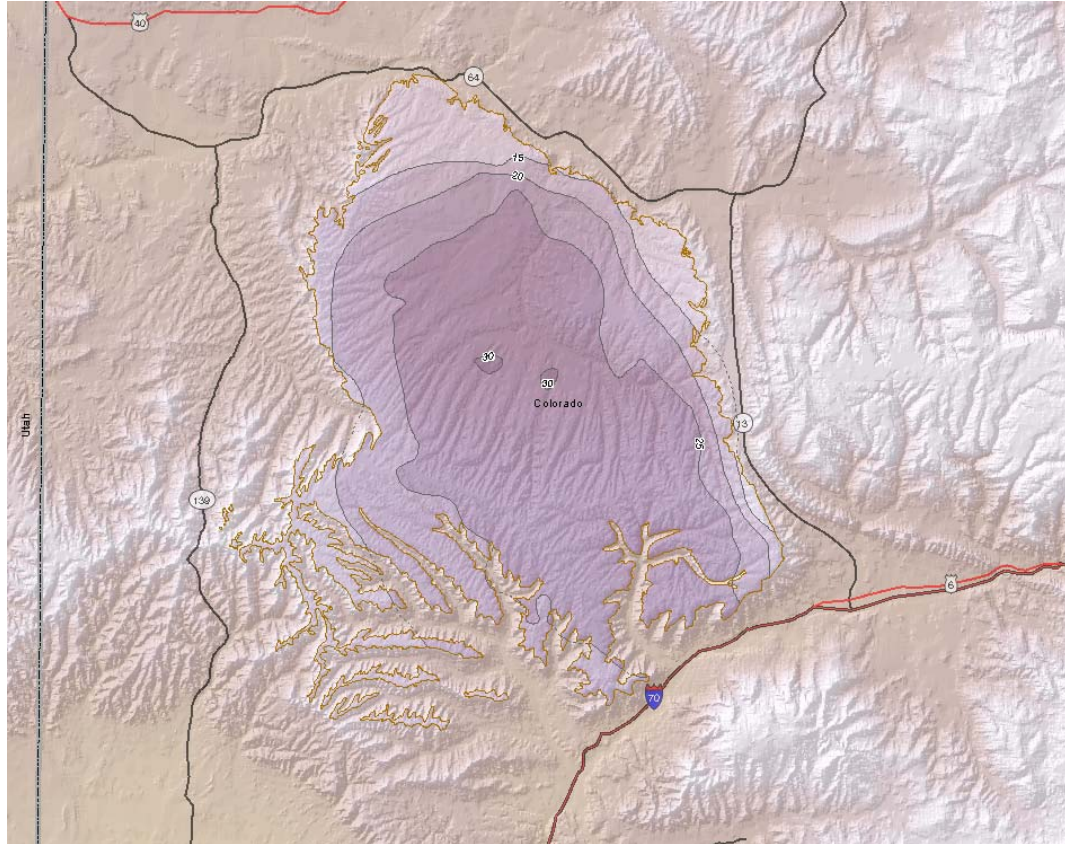
# Well completions—2000 to present



	No. of Completed Wells
Delta	26
Garfield	6,496
Mesa	898
Moffat	527
Rio Blanco	1,505
Routt	55
<b>Average wells per year =</b>	<b>1,463</b>

# Piceance Basin Oil Shale Resources

(map courtesy of USGS)



# Current growth-related effects

(Moffat and Rio Blanco Counties)

- All areas feeling effects of the current “boom”
- Some places mostly “down valley” effect, others mostly energy-related
- Housing in short supply and prices rising
- Private sector developers slow to respond
- Labor shortage and competition tough on local governments
- Local businesses busy, but have trouble getting workers

# Fiscal aspects of the “boom”

- Big increases in county road and bridge demands and costs
- Road and bridge challenges increase due to large land areas
- Increase in law enforcement demands
- Increase in hospital demands and uninsured emergencies
- Service demands are not always correlated with where workers live
- Aging infrastructure being stressed by rapid growth
- Energy-related funds (taxes, distributions, grants, etc.) heavily relied upon
- Competition for workers

# Attitudes and perceptions

- Not anti-growth, but challenged by the pace of growth
- Hard to be pro-active
- Would rather have this problem (the “boom”) than the opposite
- Concerned about losing traditional aspects of the communities
  - Agricultural lands and open spaces
  - Hunters and other recreationists
  - Different demands from new residents
- Afraid of another bust

# Contact Information

- AGNC Contract Manager: Aron Diaz  
Web-site at  
<http://www.agnc.org/cumulative.html>
- Project Manager: Judy Jordan, Garfield County Oil and Gas Liason  
(970) 625-0779  
[jjordan@garfield-county.com](mailto:jjordan@garfield-county.com)
- BBC directors: Doug Jeavons and Ford Frick  
(303) 321-2547  
[jeavons@bbcresearch.com](mailto:jeavons@bbcresearch.com)