

Health District

OF NORTHERN LARIMER COUNTY

Karen Spink, MPA, CHES
Co-Director -- Community Impact
State of the Valley Summit
May 6, 2004

Our Mission

“To improve the health status of the community”



The Health District is . . .

...a special district,
a political
subdivision of the
State of Colorado
operating under
state statutes for
special districts.



Colorado Revised Statutes – *Special Districts*

Health Services Districts may establish, maintain or operate, directly or indirectly through lease to or from other parties or other arrangement:

- public hospitals
- convalescent centers
- nursing care facilities
- intermediate care facilities
- emergency facilities
- community clinics
- ambulance service

Colorado Revised Statutes – *Special Districts*

Health Assurance Districts -- Allows a special district to be created to directly contract with a physician, nurse practitioner, or physician's assistant to provide health care services in rural areas.

– To be repealed in July 2008

Benefits and Challenges of Health Districts

Benefits

- Local control and decision making
- Fairly stable source of funding

Challenges

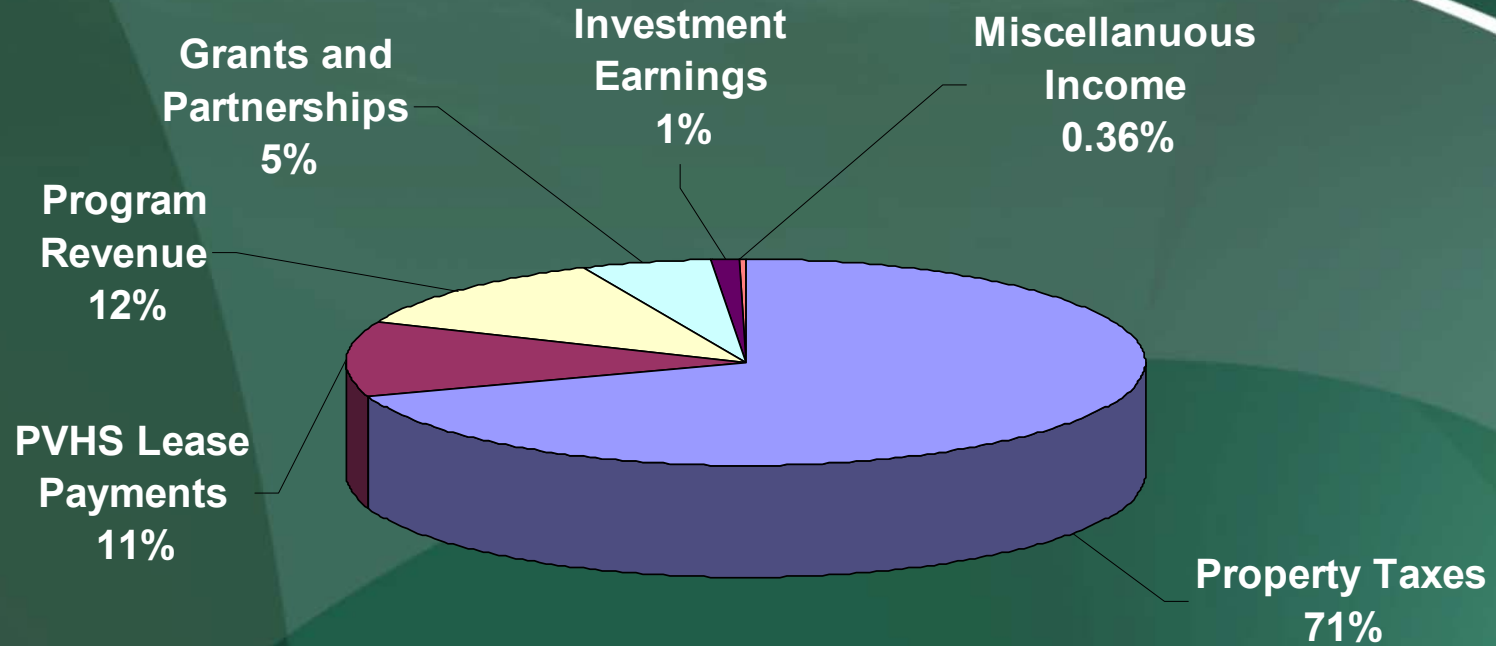
- Selling the community on a new tax
- Potential limitations in the statutes

A brief history of the Health District. . .

- **1960** — Public entity established by voters as the Poudre Valley Hospital District
- **1994** — Hospital leased to not-for-profit Poudre Valley Health System
- **2002** — Name changed to Health District of Northern Larimer County

Throughout, governed by publicly elected board of directors

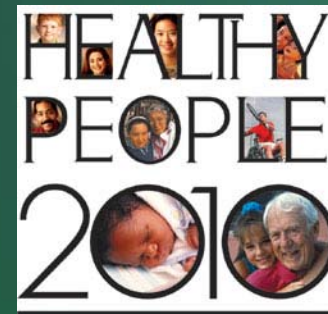
How we are funded



Total Operating Budget: \$5.5 Million

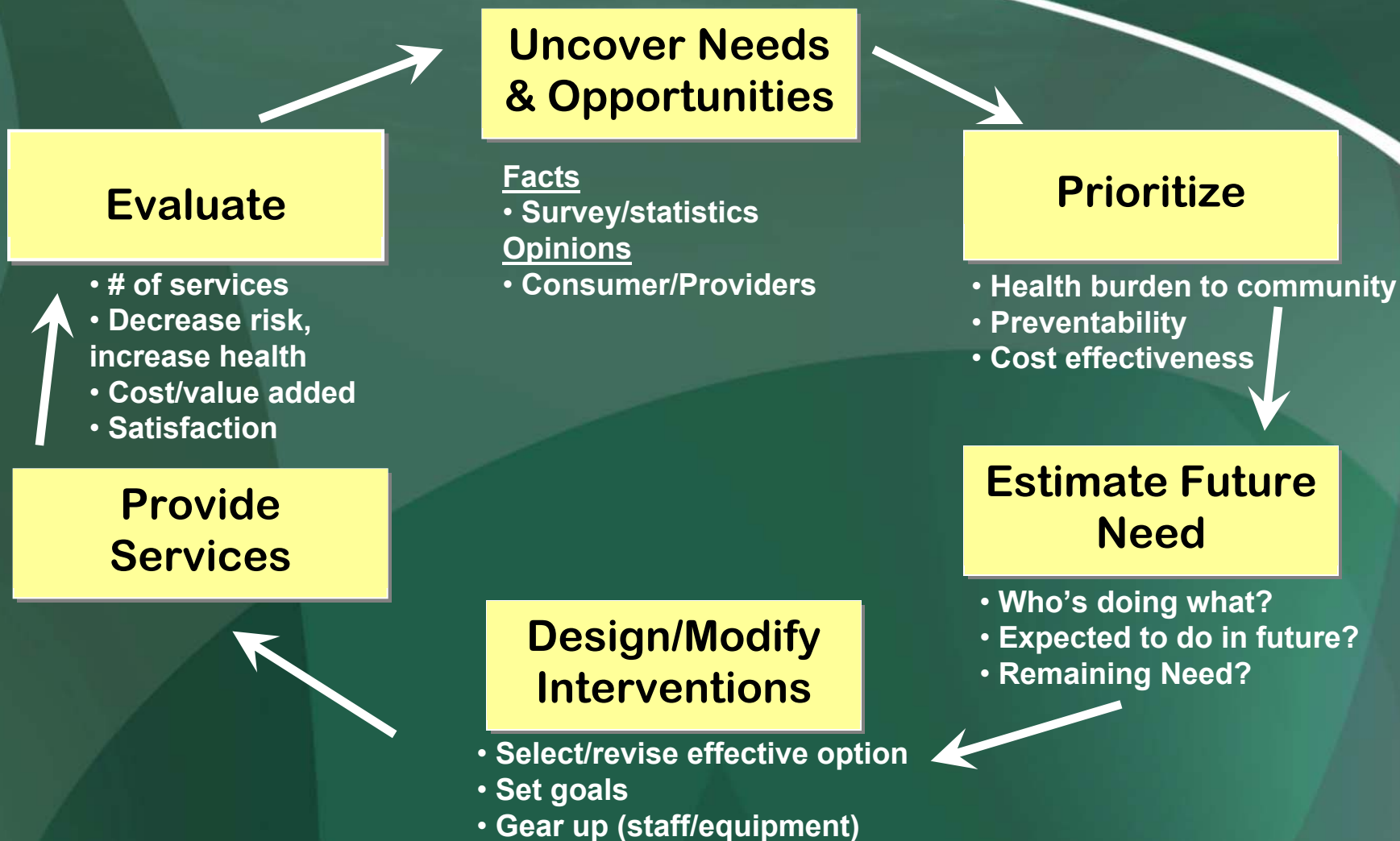
How we set our services

Every three years and extensive review of what's contributing most to poor health and early death in our community is conducted.



Targeted Community Health

Improvement Process



Family Dental

Teenager

Too embarrassed to
open mouth

Extensive decay

- 10 teeth pulled (4 front teeth)



Improved self esteem

Smiles

MARIA



Prescription Assistance



SARA

Car accident → brain injury

8 Rx → cost over \$1,000/month

SSDI Payment \$1,083



5 Rx free (MPAP)

1 Voucher

2 remaining → cost <\$100

Connections

Bi-polar disorder

Off meds

Brink of losing job

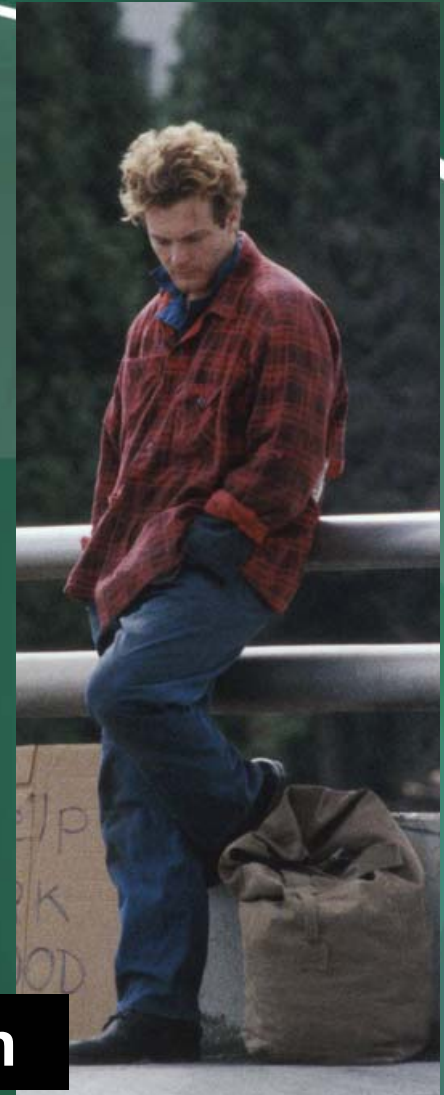


Pro Bono Therapist

Appt with doctor for Rx

Prescription Assistance Program

Stable



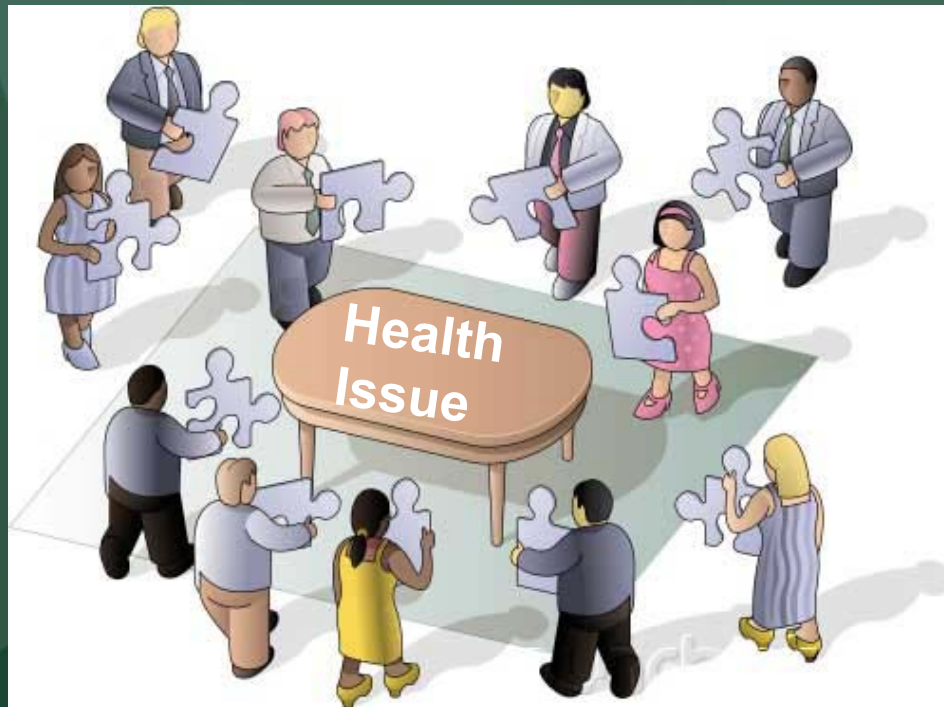
John

Health Promotion and Preventive Services



Community Impact

Mental Health and Substance
Abuse Partnership



Community Partnership for
Tobacco Prevention and Cessation

Vision for the future

